

Manufacturer's Quick Start Guide

**Spectrum100-H/
Spectrum200-H**

Front

Note: The image may differ from the actual digital receiver.



1. **Power:** Switches between operation and standby modes.
2. **Navigation:** Arrows move the cursor up, down, left, or right. Circle selects a menu or confirms a selection.
3. **Menu:** Displays the navigation keys on the front panel of digital receiver.
4. **USB:** Supports the charging of external devices (i.e. cell phone, tablet)
5. **Reset:** Restarts the digital receiver.

Note: The product information label is on the bottom of your digital receiver.

Rear

Note: The image may differ from the actual digital receiver.

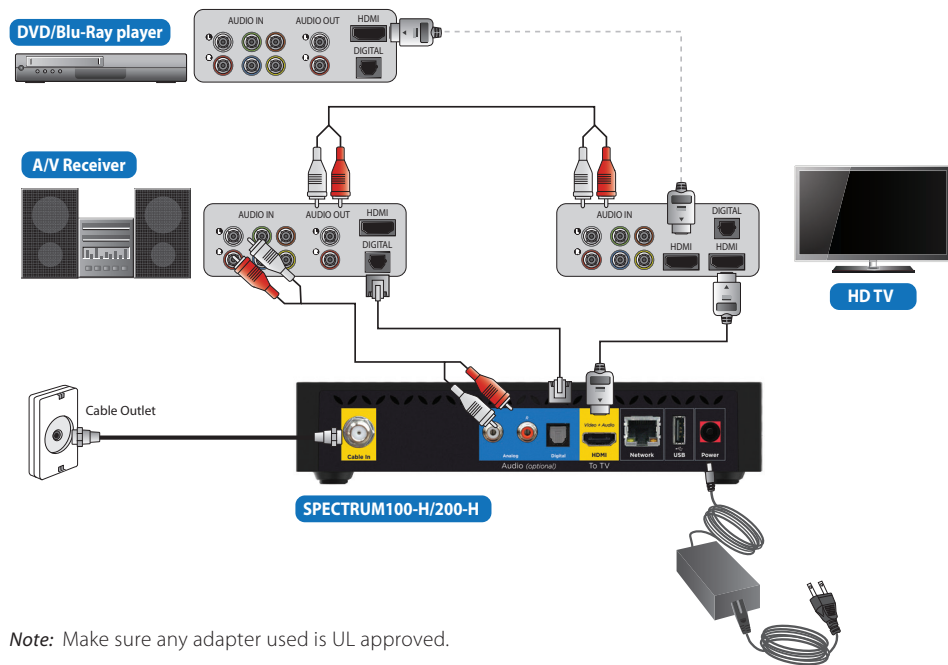


1. **Cable In:** Connect a coaxial cable from your service provider.
2. **Analog:** Use an RCA cable to connect to the audio system.
3. **Digital:** Use an S/PDIF cable to connect to the audio system.
4. **HDMI:** Use an HDMI cable to connect a high definition TV.
5. **Network:** No current capabilities
6. **USB:** No current capabilities
7. **Power:** Use the AC adaptor to connect to the power supply.

Connections

This section describes how to connect your digital receiver to match your particular equipment and to gain optimum signal quality.

Warning: Connect all equipment before you plug any power cords into the wall outlet. Always turn off the digital receiver, TV and other equipment before you connect or disconnect any cables.



Note: Make sure any adapter used is UL approved.

Connecting Your Cable

Connect a coaxial cable to the Cable In.

Connecting the TV

Using an HDMI cable

Use an HDMI cable to connect to your TV.

Using an Audio cable

Use an RCA or S/PDIF cable to connect to your audio system.

Connecting the Power

Use the supplied external adapter to connect to the wall outlet.

Only use the Charter provided Power Supply.

Note: Do not connect your digital receiver or any other equipment to the power supply until you have properly connected all the other cables.

Placement

When you install your digital receiver, follow the best practices described below:

- Do not mount the digital receiver to the back of a TV.
- Do not block the slots around the digital receiver. It is necessary to have sufficient airflow into the unit.
 - Do not cover the slots with decorative items such as papers, cloths, or plastics.
 - Do not place electronic equipment or any other objects on the digital receiver.
 - If you place the digital receiver on a rack or a bookcase, make sure that there is adequate ventilation.
 - Three inches of ventilation on the top and sides of the receiver is recommended.
- Place the digital receiver on a flat, stable surface. Avoid placing the unit on an uneven surface such as a bed, sofa, rug, or other furniture.
- Do not place the digital receiver near a radiator or heat register.
- Avoid exposing the digital receiver to liquids. Do not place containers filled with liquid on or near the digital receiver.



FCC CUSTOMER INFORMATION

This device complies with Part 15 of the FCC Rules. Operation is subject to the following two conditions:

- (1) this device may not cause harmful interference, and
- (2) this device must accept any interference received, including interference that may cause undesired operations.

FCC RF Radiation Exposure Statement

This device complies with FCC RF Radiation exposure limits set forth for an uncontrolled environment.

WARNING

Any changes or modifications not expressly approved by the manufacturer could void the user's authority to operate the device. This device and its antenna must not be co-located or operating in conjunction with any other antenna or transmitter. This device should be installed and operated with a minimum distance of 20 centimeters (equal to 8 inches) between the radiator and your body.